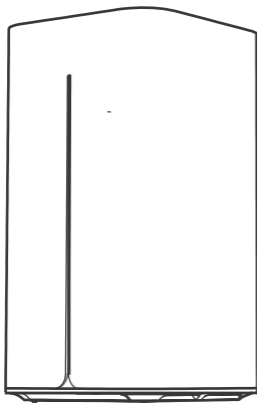


**HIKVISION**



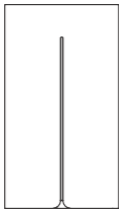
**Personal Private  
NAS**

User Manual



Download APP

## A Packing List



● H90 × 1



● Bottom Panel  
× 1



● User Manual  
× 1



● Power  
Adapter × 1

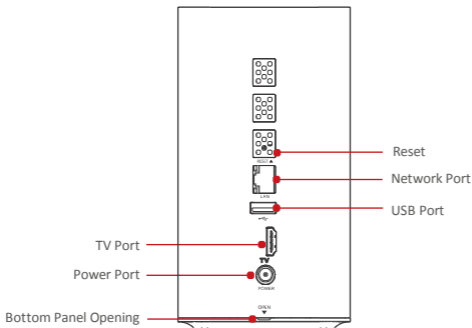


● Network Cable  
1 m × 1



A device with HDD has bottom panel installed at the factory. Content is subject to the actual package.

## B Interface

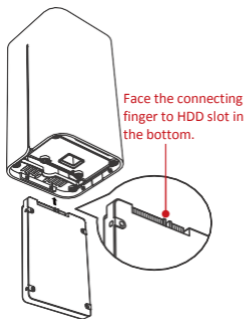
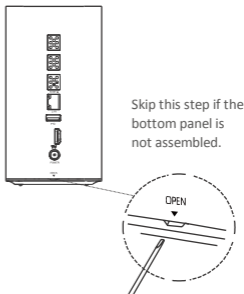


1. **Reset:** Press and hold Reset button for 5 seconds with a thin insulating object under the running status. Parameters and password of NAS will restore to the default factory (data in NAS will be reserved).
2. **USB:** Plug in USB flash drive and control via APP to import and export data or upgrade NAS.
3. **TV:** Access to set-top box, television or other devices to display stored documents.
4. **Bottom Panel Opening:** Align the openings when assembling the panel to the device. Disassemble the bottom panel from the openings with a screwdriver (self-provided) when separating the device.

## C Install HDD

- Install HDD according to the following steps before using the device if the device is not equipped with HDD at the factory.
- Skip this section if HDD is installed at the factory. You can follow the steps when changing HDD.

- 1** Pry the gap marked as OPEN in the bottom panel with slotted screwdriver (self-provided).



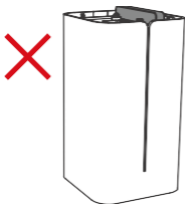
- 2** Slowly push HDD (self-provided) into the slot according to the direction in the picture.



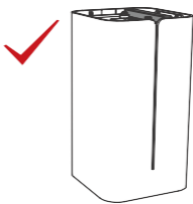
Requirements for HDD:

1. Capacity is less than or equal to 2 TB.
2. 2.5" SATA HDD (thickness is less than or equal to 9.5 mm); 2.5" SATA SSD (thickness is less than or equal to 7 mm).

## C Install HDD

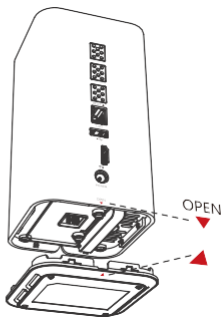


If HDD is higher than the bottom line, the installation fails. Please try again.



If HDD aligns the bottom line, the installation is completed.

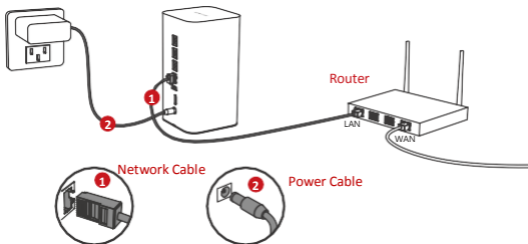
- 3** Align two OPEN marks and assemble the bottom panel.



## **D** Connect to Internet

- 1** Connect NAS to router with network cable.
- 2** Connect NAS to power adapter and plug the adapter in the socket.

Power Adapter



## **E** Connect to APP

You can manage and operate NAS via HikBox.

- 1** Scan the QR code on the cover page or download HikBox in app store.
- 2** Connect mobile phone and NAS to the same router.
- 3** Run HikBox app and scan the QR code printed at the bottom of the device.
- 4** Set parameters and manage data.



# F Legal Statement

## ○ COPYRIGHT ©2019 WUHAN HIKSTORAGE TECHNOLOGY CO.,LTD.

Any and all information, including, among others, wordings, pictures, graphs are the properties of WUHAN HIKSTORAGE TECHNOLOGY CO.,LTD (hereinafter referred to be “the Company”).

This user manual (hereinafter referred to be “the Manual”) cannot be reproduced, changed, translated, or distributed, partially or wholly, by any means, without the prior written permission of our company. Unless otherwise stipulated, our company do not make any warranties, guarantees or representations, express or implied, regarding to the Manual.

## ○ About this Manual

Product described in this Manual is applicable to Personal Private NAS.

The Manual is for guidance. Pictures, charts, images and all other information in the Manual are for description and explanation only. Difference from the actual product might exit. Please refer to the actual product. The information contained in the Manual is subject to change, without notice, due to firmware updates or other reasons. Please find the latest version in the company website ([www.hikvision.com](http://www.hikvision.com)).

Please use this user manual under the guidance of professionals.

## ○ Trademarks Acknowledgement

**HIKVISION**

and other Hikvision’s trademarks and logos are the properties of Hikvision in various jurisdictions.

# F Legal Statement

## ○ Legal Disclaimer

- TO THE MAXIMUM EXTENT PERMITTED BY APPLICABLE LAW, THE PRODUCT DESCRIBED, WITH ITS HARDWARE, SOFTWARE AND FIRMWARE, IS PROVIDED "AS IS", WITH ALL FAULTS AND ERRORS, AND HIKVISION MAKES NO WARRANTIES, EXPRESS OR IMPLIED, INCLUDING WITHOUT LIMITATION, MERCHANTABILITY, SATISFACTORY QUALITY, FITNESS FOR A PARTICULAR PURPOSE, AND NON-INFRINGEMENT OF THIRD PARTY. IN NO EVENT WILL HIKVISION, ITS DIRECTORS, OFFICERS, EMPLOYEES, OR AGENTS BE LIABLE TO YOU FOR ANY SPECIAL, CONSEQUENTIAL, INCIDENTAL, OR INDIRECT DAMAGES, INCLUDING, AMONG OTHERS, DAMAGES FOR LOSS OF BUSINESS PROFITS, BUSINESS INTERRUPTION, OR LOSS OF DATA OR DOCUMENTATION, IN CONNECTION WITH THE USE OF THIS PRODUCT, EVEN IF HIKVISION HAS BEEN ADVISED OF THE POSSIBILITY OF SUCH DAMAGES.
- REGARDING TO THE PRODUCT WITH INTERNET ACCESS, THE USE OF PRODUCT SHALL BE WHOLLY AT YOUR OWN RISKS. HIKVISION SHALL NOT TAKE ANY RESPONSIBILITIES FOR ABNORMAL OPERATION, PRIVACY LEAKAGE OR OTHER DAMAGES RESULTING FROM CYBER ATTACK, HACKER ATTACK, VIRUS INSPECTION, OR OTHER INTERNET SECURITY RISKS; HOWEVER, HIKVISION WILL PROVIDE TIMELY TECHNICAL SUPPORT IF REQUIRED.
- SURVEILLANCE LAWS VARY BY JURISDICTION. PLEASE CHECK ALL RELEVANT LAWS IN YOUR JURISDICTION BEFORE USING THIS PRODUCT IN ORDER TO ENSURE THAT YOUR USE CONFORMS THE APPLICABLE LAW. HIKVISION SHALL NOT BE LIABLE IN THE EVENT THAT THIS PRODUCT IS USED WITH ILLEGITIMATE PURPOSES.
- IN THE EVENT OF ANY CONFLICTS BETWEEN THIS MANUAL AND THE APPLICABLE LAW, THE LATER PREVAILS.