

Setting Guidance for Fingerprint Lock of Drawer

I. Introduction to This Lock and Instructions for Running out of Power

(1.1) This lock uses 3 AAA dry batteries. (Do not use batteries of poor quality, which may affect the using experience and cause frequent battery replacement in a short time)

This lock has extremely low power consumption. If high-quality batteries with a retention period of 5-10 years are used, then the batteries need to be replaced only once every 5-10 years.

(1.2) When this lock is used for the first time (Factory Mode), touch the fingerprint chip with any finger and the white fingerprint light (red and blue) will light up. Meanwhile, this lock is unlocked. After 5 seconds, this lock will be locked automatically.

(1.3) Press the fingerprint chip with the fingerprint recorded successfully. The green light will be on, the fingerprint will be identified correctly and this lock will be unlocked successfully. Press the fingerprint chip with the fingerprint failing to be recorded, the red light will be on, the fingerprint will be identified incorrectly and this lock will fail in unlocking.

(1.4) During the 5-second period from unlocking with the fingerprint to locking, there will be no reaction if pressing the fingerprint (the lock tongue contracts) to (the lock tongue automatically pops up).

(1.5) To prevent situations where the lock cannot be opened for running out of power, the following solutions have been designed.

A: Brand new batteries (normal use)

B: An alarm will be given before the batteries are low (the red light flashes for 3 seconds after releasing the fingerprint pressing) and the batteries must be replaced in time.

C: Before the batteries completely running out of power (after pressing the fingerprint to unlock the lock, the lock will not be locked again and new batteries must be replaced. After replacing the new batteries, the locking tongue will automatically bounce up and resume normal use)

(1.6) Warning: Be sure to install the battery correctly, cover the battery cover, test whether the fingerprint unlocking is normal, and finally close the drawer cabinet door.

(1.7) If the drawer cabinet is locked during using, but the light has no reaction after pressing the fingerprint (it is likely to be completely out of power), please contact us for the complete solution.

II. Fingerprint Setting and Functions ((20 fingerprints can be recorded, including 1 administrator and 19 normal users))

(2.1) The navigation map for administrator to record the fingerprint. (the first recorded fingerprint will be recognized as the administrator, who has the authority to add normal users, delete all fingerprint passwords, and unlock the lock.)

1. Press the fingerprint chip with the finger, and the white fingerprint light will be on (red and blue). Unlock. The finger should NOT be released.
2. Press for about 5 seconds. The blue light will be on and the finger should be quickly released.
3. Press the fingerprint chip again. The light will turn green, the the finger should be released. Press the chip again. The light will turn green again and release the finger again. Repeat the above procedures for 8 times.
4. The administrator's fingerprint is NOT recorded successfully until the green light flashes for 3 seconds.
5. The red light is on and off, indicating the administrator's fingerprint fails to be recorded

(2.2) The navigation map for normal users to record the fingerprint. (The normal users' fingerprints cannot be recorded without the authority of administrator)

1. Press the fingerprint chip with the administrator's fingerprint and the green light will be on. Unlock. The finger should NOT be released.
2. Continue to press for about 5 seconds until the blue light will be on. Then the finger should be released quickly.
3. Then press the fingerprint chip with another finger and release the finger until the light will turn green. Press the fingerprint chip, and release the finger until the light will turn green again. Repeat the above procedures for about 7 times
4. The normal user's fingerprint is NOT recorded successfully until the green light flashes for 3 seconds.
5. The red light is on and off indicating the normal user's fingerprint fails to be recorded

(2.3) The navigation map for the administrator to delete all the fingerprint passwords. (Deleting means deleting all the fingerprint passwords, which is equal to restoring factory settings)

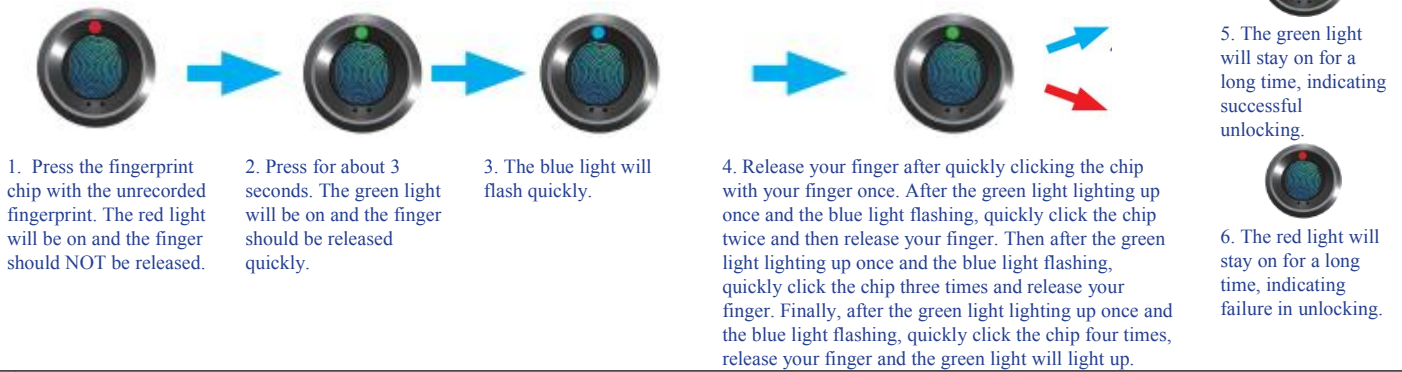
1. Press the fingerprint chip with the administrator's fingerprint and the green light will be on. Unlock. The finger should NOT be released.
2. Press for about 3 seconds. The blue light will be on and the finger should NOT be released.
3. Press for about 3 seconds. The green light will be on and the finger should NOT be released.
4. Press for about 3 seconds. The red light will be on and the finger should be released quickly.
5. Press with the administrator's fingerprint once more
6. The green light flashes, indicating all the fingerprint passwords are deleted successfully.
7. The red light is on, indicating all the fingerprint passwords are to be deleted.

III. Password Setting and Functions (Default initial password:1234)

Important Note: This password does not require to press the numbers, which is somewhat similar to the Morse code format. For example, if the fingerprint chip is clicked quickly and continuously click once and then released, the green light will be on once, which represents 1. If the fingerprint chip is quickly and continuously clicked for six times and then released, the green light will be on once, which represents 6, and the like. (Special Note: If the fingerprint chip is quickly and continuously clicked for 10 times or more, which represents 0) The password can be set to 1 to 8 digits, for example, the password is set as 012, 12, 1, 9, 123, 0124, 333, 2345, 123456, 2222222, 12345678, etc

(3.1) The navigation map for password unlocking (Default initial password:1234)

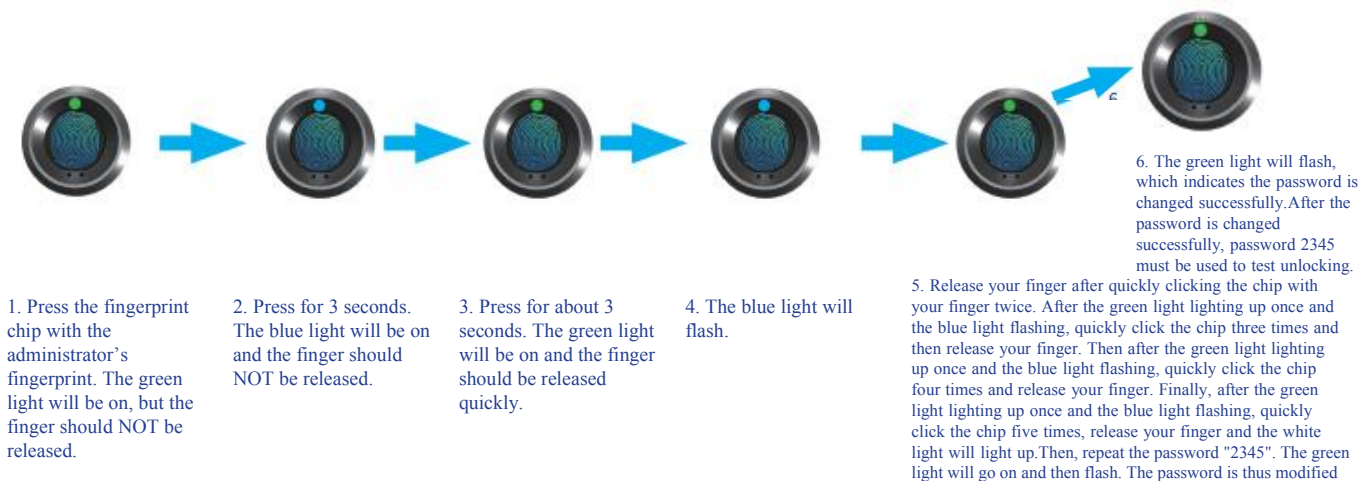
Tips: The following navigation map is demonstrated with the default initial password 1234.



(3.2) The navigation map for password changes

Important note: The password is rarely used, even not for once in a year. However, it is very important when fingerprints are worn, injured, or incorrectly identified. Or when the owner is not nearby, but it is necessary to ask others to take out the items in the cabinet. The password plays a key role in preventing the lock and cabinet opened by prying, but never forget the password. If the lock cannot be unlocked due to forgetting the password, all responsibilities and consequences will be borne by yourself. It is strongly recommended to change the password to a password that is easy to remember, such as the phone start-up password, password of the bank card, etc.

Tip: The following navigation map is demonstrated based on changing the default initial password from 1234 to 2345.



(3.3) The navigation map for password deleting (password deleting means deleting all the fingerprint passwords, which is equal to restoring factory setting)

Tip: The following navigation map is demonstrated using the changed password: 2345.

